

# Kentucky

NAEP proficiency level and percentile data as well as results from state assessments demonstrate the existence of substantial excellence gaps for Black, Hispanic, and Free and Reduced Lunch Eligible students. White students had higher average AP scores than Black students on AP tests and were more likely to make a “5” on an AP exam or take an AP exam, while Hispanic students’ performances were more competitive.

According to NAEP proficiency data, the percentage of students at the advanced level increased in Math and Reading Grade 4 for non-FARM and white students in both grades, FARM students in Math Grade 4, and Black students in Math Grade 8, while FARM and white students’ performances declined in Reading Grade 8. The excellence gap expanded FARM and Black students for all but Black students in Reading Grade 8, where they were able to narrow the gap because of the decline in white students’ performances.

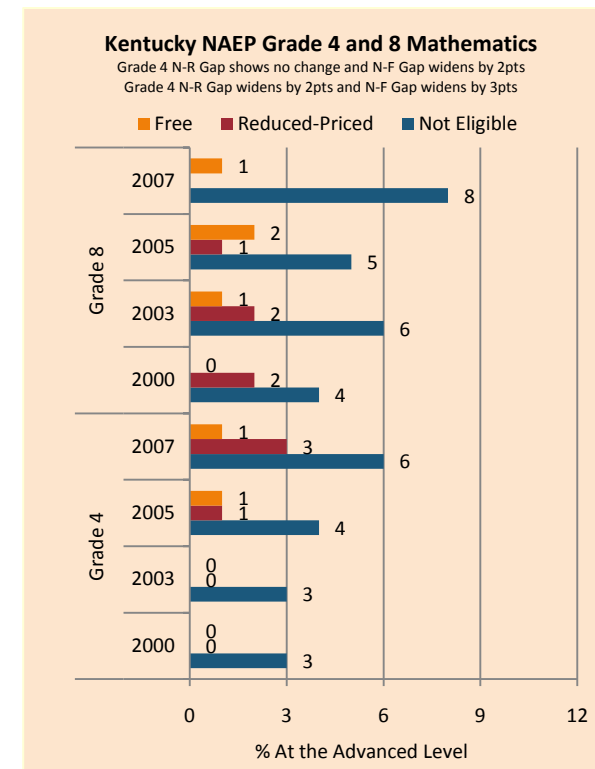
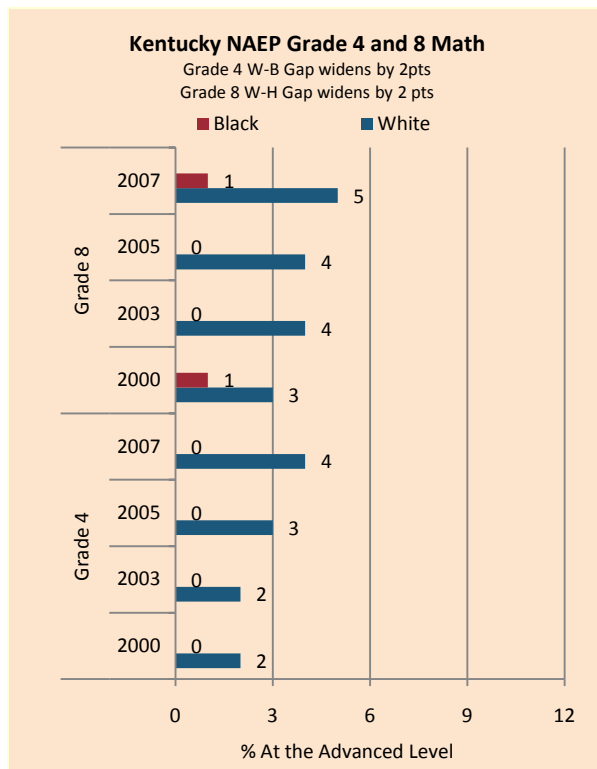
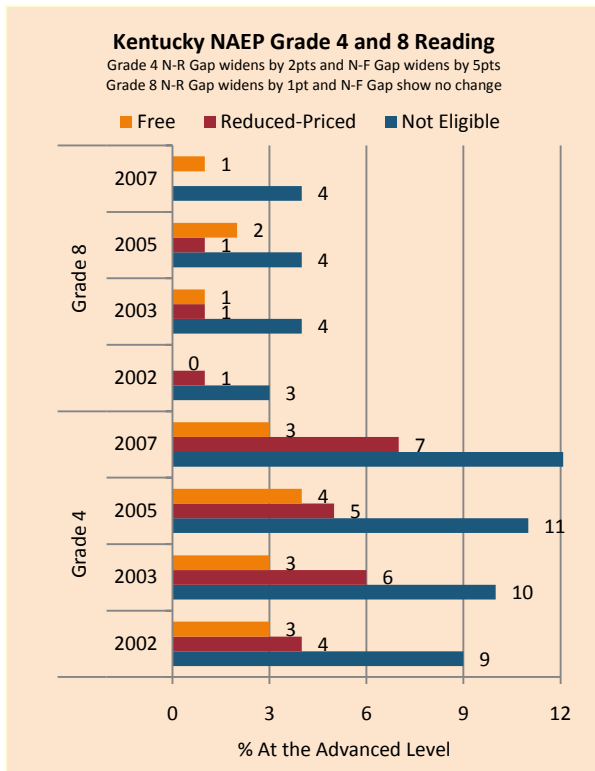
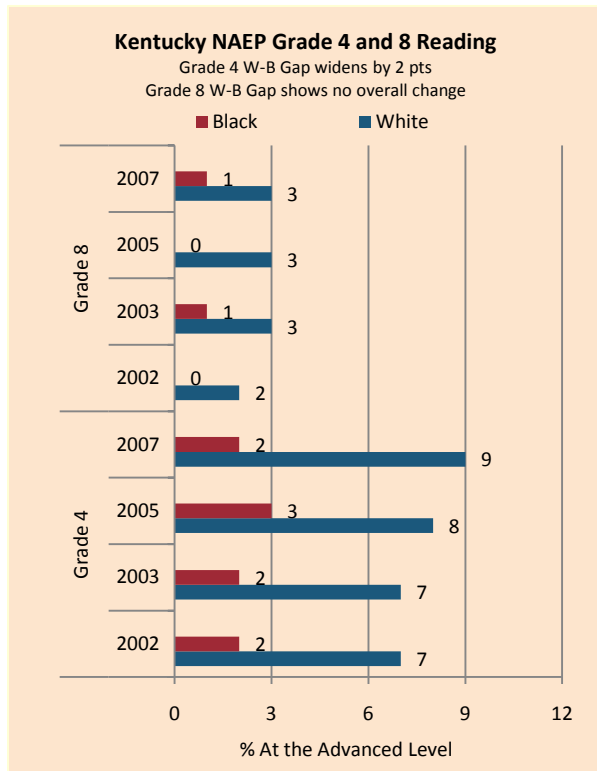
NAEP scale scores at the 90<sup>th</sup> percentile increased in Math, with Black and Hispanic students narrowing the excellence gap but FARM students advancing less quickly than non-FARM students. Only non-FARM and white students improved in Reading Grade 4 (expanding achievement gaps), and only Black students in Reading Grade 8, with declines among Black students in Grade 4 and white and FARM students in Grade 8.

The proportion of students scoring at the advanced level on state assessments rose in Reading for ethnic and income subgroups across grade levels in Math in both elementary and middle school. The performance of white and affluent high achievers generally increased faster than Black, Hispanic, and lower-income students on those exams. There was little change in performance or achievement gaps in high school Math.

On the AP exams, there were modest increases in the gaps between white and Black students in mean scores and the percentage of tests taken that scored a 5 on the exam weighted by subgroup, but a decrease in the gap between white and Hispanic students in the percentage of tests taken that scored a 5 on the AP exam. The gap in the number of tests taken that scored a 5 on the exam weighted by enrollment increased for both groups.

**Summary of State Policy as of 2006-2007**

State	Mandate Identify	Mandate Services	Gifted Identified	Identified by Gender	Identified by Ethnicity	GT Funding	GT Funding per Identified
<b>Kentucky</b>	yes	yes	113,671	yes	no	\$7,100,000	\$62.46



NAEP Scores at the 90 <sup>th</sup> Percentile				
Subject, Grade, Group	2003	2007	2003 Gap	2007 Gap
Math 4 Male	264	270	6	4
Math 4 Female	259	267		
Math 8 Male	319	324	5	6
Math 8 Female	315	318		
Reading 4 Male	257	262	8	6
Reading 4 Female	265	267		
Reading 8 Male	300	298	9	9
Reading 8 Female	310	307		
Math 4 ELL		257		11
Math 4 NonELL	262	269		
Math 8 ELL				
Math 8 NonELL	317	322		
Reading 4 ELL				
Reading 4 NonELL	261	265		
Reading 8 ELL				
Reading 8 NonELL	306	303		
Math 4 FARM	251	257	17	18
Math 4 NonFARM	268	275		
Math 8 FARM	302	307	22	23
Math 8 NonFARM	324	330		
Reading 4 FARM	252	252	16	21
Reading 4 NonFARM	268	273		
Reading 8 FARM	297	291	14	20
Reading 8 NonFARM	310	311		
Math 4 White	277	283		
Math 4 Black	251	260	26	23
Math 4 Hispanic	259	267	18	16
Math 8 White	318	323		
Math 8 Black	291	302	27	21
Math 8 Hispanic				
Reading 4 White	262	266		
Reading 4 Black	247	245	15	21
Reading 4 Hispanic				
Reading 8 White	307	304		
Reading 8 Black	287	289	19	15
Reading 8 Hispanic				

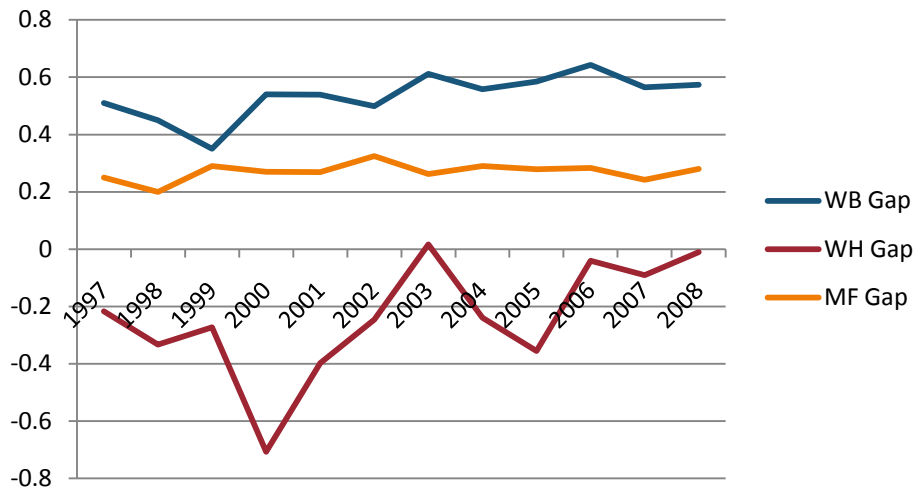
KY Core Content Test Grade 4, 7, 10 in Reading Excellence Achievement Gaps on Race															
% At the Distinguished Level	Grade 4					Grade 7					Grade 10				
	W	B	H	W-B	W-H	W	B	H	W-B	W-H	W	B	H	W-B	W-H
2002	6	2	4	4	2	7	2	5	5	2	8	2	5	6	3
2003	7	3	3	4	4	8	2	6	6	2	9	3	4	6	5
2004	8	4	5	4	3	7	3	4	4	3	12	5	9	7	3
2005	9	3	5	6	4	10	4	6	6	4	12	4	6	8	6
2006	12	6	7	6	5	8	3	4	5	4	17	7	9	10	8
2007	21	10	15	11	6	16	8	12	8	4	13	5	8	8	5
2008	17	8	12	9	5	14	6	11	8	3	11	5	7	6	4

KY Core Content Test Grade 5, 8, 11 in Mathematics Excellence Achievement Gaps on Race															
% At the Distinguished Level	Grade 5					Grade 8					Grade 11				
	W	B	H	W-B	W-H	W	B	H	W-B	W-H	W	B	H	W-B	W-H
2002	8	2	4	6	4	6	1	2	5	4	10	2	8	8	2
2003	9	3	6	6	3	9	1	4	8	5	11	2	6	9	5
2004	14	4	8	10	6	9	2	4	7	5	14	3	8	11	6
2005	12	4	8	8	4	11	2	5	9	6	12	3	7	9	5
2006	19	7	12	12	7	10	3	6	7	4	15	4	7	11	8
2007	25	10	17	15	8	17	5	9	12	8	11	3	6	8	5
2008	28	11	17	17	11	18	5	8	13	10	11	3	6	8	5

KY Core Content Test Grade 4, 7, 10 Reading Excellence Achievement Gaps on SES									
% At the Advanced Level	Grade 4			Grade 7			Grade 10		
	N	P	Gap	N	P	Gap	N	P	Gap
2002	9	3	6	9	2	7	10	2	8
2003	10	4	6	11	3	8	11	3	8
2004	11	5	6	10	4	6	15	5	10
2005	11	5	6	14	5	9	15	5	10
2006	16	7	9	11	4	7	21	8	13
2007	26	13	13	21	9	12	17	6	11
2008	23	10	13	18	8	10	16	5	11

KY Core Content Test Grade 5, 8, 11 Mathematics Excellence Achievement Gaps on SES									
% At the Advanced Level	Grade 5			Grade 8			Grade 11		
	N	P	Gap	N	P	Gap	N	P	Gap
2002	11	3	8	8	1	7	12	3	9
2003	13	4	9	12	3	9	13	4	9
2004	19	7	12	13	3	10	17	5	12
2005	17	6	11	15	4	11	15	4	11
2006	25	10	15	14	4	10	19	6	13
2007	33	14	19	24	8	16	14	3	11
2008	36	17	19	25	9	16	14	4	10

Gaps in Mean AP Scores

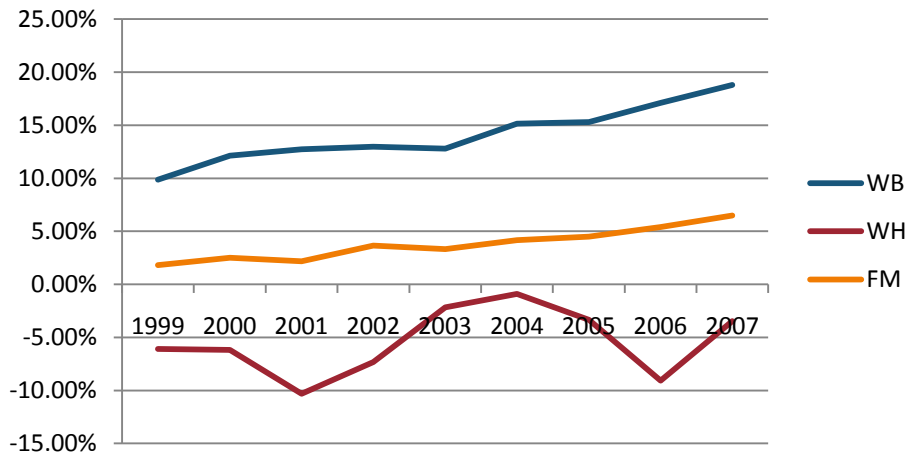


Gaps in the Percentage of Tests Taken Receiving a "5" on the AP Exam by Subgroup\*

	1997	1998	1999	2000	2001	2002	2003	2004	2005	2006	2007	2008
Male	11.28%	10.73%	12.30%	11.45%	10.88%	12.75%	10.22%	11.80%	11.30%	12.60%	11.73%	12.42%
Female	6.71%	6.75%	6.75%	7.19%	6.86%	6.71%	6.16%	6.92%	6.64%	7.47%	7.39%	7.14%
White	8.28%	8.28%	8.88%	8.67%	8.35%	8.98%	7.82%	8.61%	8.30%	9.27%	9.09%	8.99%
Black	2.40%	2.16%	3.49%	3.17%	4.74%	4.64%	2.67%	3.72%	3.66%	4.06%	2.86%	3.78%
Hispanic	16.33%	15.09%	12.50%	21.43%	17.39%	12.84%	9.26%	13.02%	15.65%	11.26%	8.84%	11.13%
M-F Gap	4.56%	3.98%	5.55%	4.26%	4.02%	6.03%	4.06%	4.88%	4.66%	5.13%	4.34%	5.28%
W-B Gap	5.88%	6.12%	5.39%	5.50%	3.61%	4.34%	5.15%	4.88%	4.64%	5.21%	6.23%	5.22%
W-H Gap	-8.04%	-6.81%	-3.62%	-12.76%	-9.04%	-3.86%	-1.44%	-4.41%	-7.35%	-1.98%	0.25%	-2.14%

Gaps in the Percentage of Tests Taken Receiving a "5" on the AP Exam by Subgroup Weighted by Enrollment*									
	1999	2000	2001	2002	2003	2004	2005	2006	2007
Male	1.43%	1.53%	1.66%	2.06%	1.90%	2.42%	2.48%	3.05%	3.01%
Female	0.91%	1.14%	1.19%	1.33%	1.35%	1.71%	1.75%	2.22%	2.37%
White	1.09%	1.28%	1.34%	1.60%	1.57%	1.93%	1.95%	2.41%	2.58%
Black	0.08%	0.08%	0.16%	0.23%	0.19%	0.27%	0.30%	0.36%	0.28%
Hispanic	2.30%	4.48%	4.59%	3.23%	2.06%	3.03%	4.20%	3.94%	2.82%
M-F Gap	0.52%	0.39%	0.46%	0.73%	0.55%	0.71%	0.72%	0.84%	0.63%
W-B Gap	1.01%	1.19%	1.18%	1.38%	1.37%	1.66%	1.65%	2.05%	2.31%
W-H Gap	-1.21%	-3.20%	-3.25%	-1.63%	-0.49%	-1.10%	-2.25%	-1.54%	-0.23%

Gaps in the Number of Tests Taken Weighted by Subgroup Enrollment\*



\*The unit of analysis for AP data is the test, not the student. AP test results are presented as the number of scores received by members of each subgroup, NOT the number of students who received a given score on any exam. These numbers are not equivalent because some students take multiple tests.